

DESIGNED FOR:
**PATRICK
SQUARE**
CLEMSON, SC

YORK COTTAGE
LOT 59
COASTAL
CLASSICAL

DISCLAIMER
ALL RIGHTS IN AND TO THESE DRAWINGS ARE RESERVED BY LEW OLIVER INC. THESE DRAWINGS ARE THE PROPERTY OF LEW OLIVER INC. AND ARE NOT TO BE REPRODUCED, COPIED, OR TRANSMITTED IN ANY FORM OR BY ANY MEANS, ELECTRONIC OR MECHANICAL, INCLUDING PHOTOCOPYING, RECORDING, OR BY ANY INFORMATION STORAGE AND RETRIEVAL SYSTEM. ANY REPRODUCTION OR TRANSMISSION OF THESE DRAWINGS WITHOUT THE WRITTEN PERMISSION OF LEW OLIVER INC. IS STRICTLY PROHIBITED. THIS DRAWING IS TO AN AUTHORIZED AND PAID FOR LOW CLEAR FINISH FLOOR AREA ONLY. THE USER AGREES TO HOLD LEW OLIVER INC. HARMLESS FROM AND AGAINST ALL CLAIMS, DAMAGES, LOSSES, AND EXPENSES, INCLUDING REASONABLE ATTORNEY'S FEES, ARISING OUT OF OR RESULTING FROM THE USE OF THESE DRAWINGS. THE USER AGREES TO HOLD LEW OLIVER INC. HARMLESS FROM AND AGAINST ALL CLAIMS, DAMAGES, LOSSES, AND EXPENSES, INCLUDING REASONABLE ATTORNEY'S FEES, ARISING OUT OF OR RESULTING FROM THE USE OF THESE DRAWINGS. THE USER AGREES TO HOLD LEW OLIVER INC. HARMLESS FROM AND AGAINST ALL CLAIMS, DAMAGES, LOSSES, AND EXPENSES, INCLUDING REASONABLE ATTORNEY'S FEES, ARISING OUT OF OR RESULTING FROM THE USE OF THESE DRAWINGS. THE USER AGREES TO HOLD LEW OLIVER INC. HARMLESS FROM AND AGAINST ALL CLAIMS, DAMAGES, LOSSES, AND EXPENSES, INCLUDING REASONABLE ATTORNEY'S FEES, ARISING OUT OF OR RESULTING FROM THE USE OF THESE DRAWINGS.

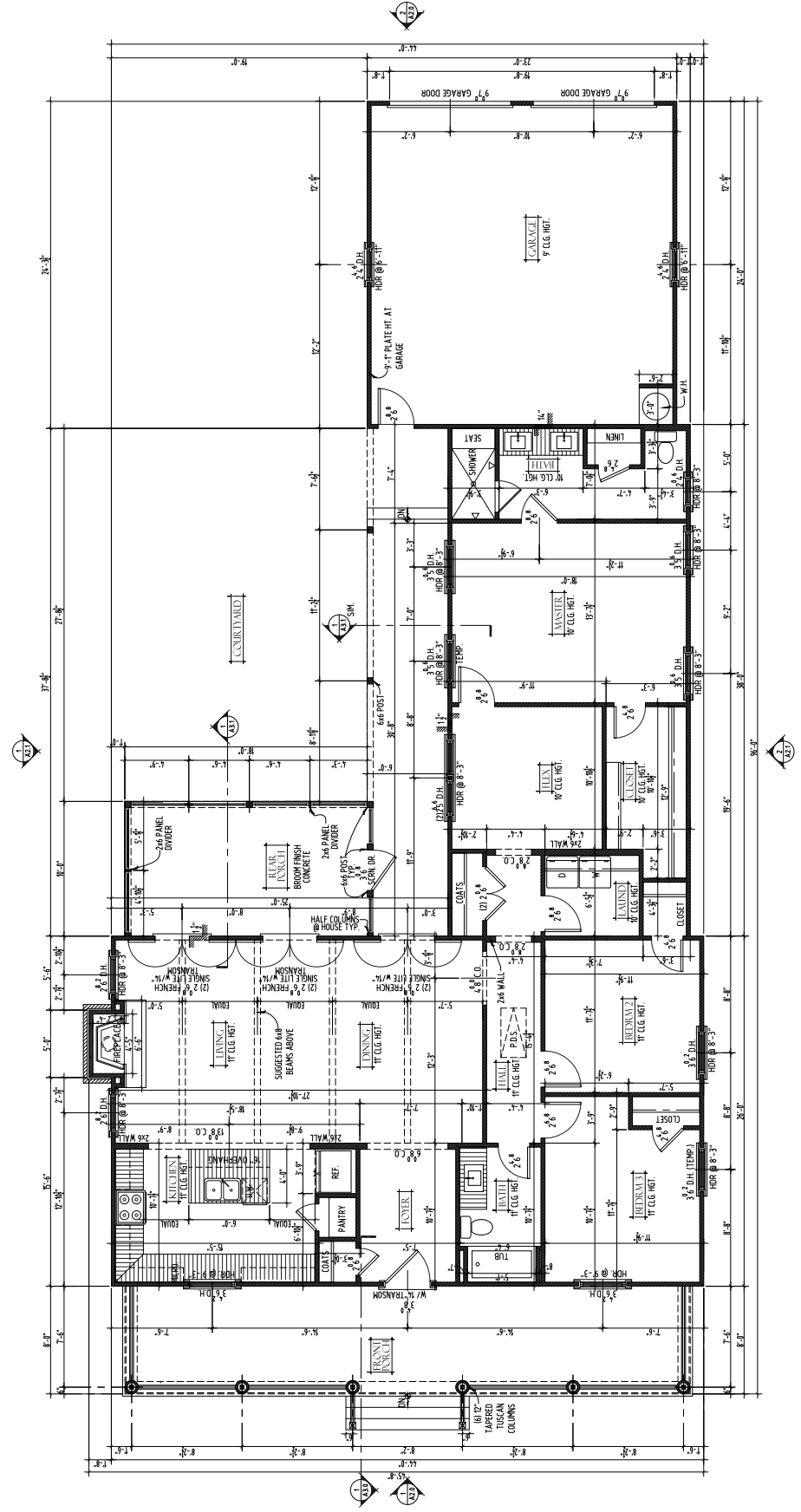
**FIRST FLOOR
PLAN**

FILE NO: LOT 59
DRAWN BY: LDC
DATE: 03/20/11

ALI

SHEET 3 OF 9
VEICF 770-643-9938

880 MARBETTA HWY., SUITE 600-42 RUSSELL, GA. 30075



FIRST FLOOR PLAN
SCALE: 1/8" = 1'-0"